

UMBRA Plinth MgO Gas Fire Pit

Safety Instructions and Operation Manual
901681



Heat Outdoors
Unit 9, Stort Valley Industrial Estate
Stansted Road, Bishop's Stortford
Hertfordshire, United Kingdom
CM23 2TU

www.heat-outdoors.co.uk
01279 466500
info@heat-outdoors.co.uk

Contents

Warning	3
Leakage Test	4
Location	4
Safety Precautions	5
Installation	6
Technical Specifications	7
Assembly Instructions	8
Connecting the LPG Gas Cylinder.	10
Operation	11
Replacing the gas cylinder.	12
Cleaning & maintenance	13
Troubleshooting	14
Storage	15
Customer Service	15

Warning

Please carefully read all instructions provided before using this appliance. This heater must be installed in accordance with the instructions and local regulations. The use of this appliance in enclosed areas can be dangerous and is prohibited.

- Perform the 'leak test' after each change of the gas cylinder.

Never check for leaks with a naked flame

- Do not store other flammable vapours or liquids near this appliance.

If you smell gas, follow the steps below:

1. Extinguish all naked flames; do not operate any electrical appliances
2. Close the valve of the regulator to stop gas running to the unit and turn the heater to the OFF position (full disk = ●)
3. Ensure the regulator is fixed to the bottle correctly.
4. Check the hose from the gas bottle to the unit has no splits - this can be done with soapy water to identify splits in the hose.
5. If odour persist contact Heat Outdoors or a gas supplier.

Leakage Test

Gas connections on the appliance are leak tested prior to shipment. Possible mishandling of the appliance during shipment can damage the integrity of some parts.

A complete gas leakage test must be performed again at the installation site. Please follow the procedure below for leakage test.

1. It is advised to make a soap / liquid detergent and water solution to identify any holes/splits or loose fittings in the tube.
2. Make sure the control tap is in the **OFF** position on the control panel.
3. Apply the solution to the hose using a brush or rag.
4. Turn **ON** the gas supply and check for bubbles from the hose. If the air bubbles appear this indicates a leak in the hose.
5. If a leak is present, turn **OFF** the gas supply immediately, tighten or replace any leaking fitting carefully, turn gas again and recheck.

Location

The appliance is for outdoor use only.

Do not use the heater indoors or in an enclosed area. Always ensure that adequate air ventilation is provided.

- Do not use the heater in a basement or below ground level.
- This appliance should only be used in an above ground open-air situation with natural ventilation, where gas leakage or combustible materials are dispersed.
- Any enclosure in which the appliance is used should comply with one of the following:
 - Within a partial enclosure that includes an overhead cover and more than two walls, the following shall apply:
 - At least 25% of the total wall area is completely open and at least 30% of the remaining wall area is open and unrestricted.
 - If being used on a balcon area, at least 20% of the total wall area should remain open and unrestricted.

This appliance should only be used in an outdoor area and should not be used in a building, garage or any other enclosed area.

Safety Precautions

- Performance and safety service of this heater should be performed annually by a qualified gas engineer.
- Do not use the heater in a combustible atmosphere.
- Do not store or use petrol or other flammable liquids in the heater unit.
- Before using the unit check the whole gas system ie. hoses for splits, twists which may cause gas to leak or prevent flow.
- The recommended frequency of checking the tubing or the flexible hose is at least once per month and each time the cylinder is changed. If it shows signs of cracking, splitting or other deterioration it should be changed for new hose of the same length and of the equivalent quality.
- Disconnect gas cylinder before moving the heater.
- Do not attempt to modify any parts of the heater.
- The appliance is not recommended to be used in basements, below ground level or in areas with limited / no ventilation.
- Ensure the heater is placed on a solid and level surface.
- It is recommended that you change the regulator annually to avoid blockages.
- Do not clean the heater with cleaners that are combustible or corrosive.
- Do not paint any part of the heater.
- The gas cylinder valve should be turned off when the heater is not in use.
- Avoid using the heater when it is raining to prevent water ingress.
- Keep children and vulnerable people away from the heater when in use.
- Do not move the heater when it is in use.
- Check the heater immediately if any of the following exists:
 - There is a smell of gas.
 - The heater performance of the heater seems to be reduced.
 - The burner makes popping noise during use (a slight popping noise is normal when the flame is extinguished after use).
- When the heater is in use the surface of the grills, reflector and glass will reach a high temperature. Do not touch these parts.
- Do not obstruct the ventilation holes of the cylinder housing.
- Only use the gas specified - 13kg-15kg Propane patio gas.
- In adverse weather conditions it is advised the heater is stored undercover or inside where possible.
- The gas cylinder should be turned off when the heater is not in use.

Installation

Important safety requirements:

THIS APPLIANCE IS FOR OUTDOOR USE ONLY

1. It is not recommended for this heater to be installed or used indoors, garages or any other enclosed area.
2. **DO NOT** place articles on or against this appliance.
3. **DO NOT** use or store flammable materials near this appliance.
4. **DO NOT** operate this appliance unless it is fully assembled with reflector and protection guard in place.
5. Installation and repair should be done by a qualified service person. The appliance must be inspected before use and at least annually serviced by a qualified gas engineer. More frequent cleaning may be required.

Technical Specifications

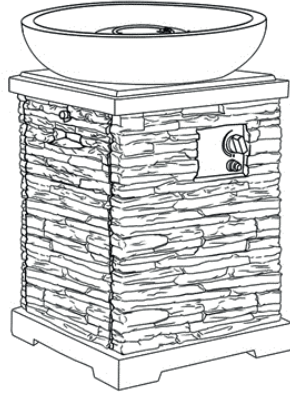
Product Name	Umbra Plinth MgO Gas Fire Pit		
Model No.	901681		
Gas Type	LPG gas mixture	Butane at (28~30)mbar/ Propane at 37mbar	LPG gas mixture
Gas Category	I _{3B/P(30)}	I ₃₊	I _{3B/P(50)}
Pn (mbar)	28~30	28-30/37	50
Nominal heat input (Hs)	12 kW		
Gas consumption	G30/872g/h)	G30/872 g/h G31/857g/h	G30/872g/h)
Injector diameter (Ø) and No.	1.7 mm x 1	1.7 mm x 1	1.5 mm x 1
Gas regulator	Certified regulator according to EN 12864 (flow rate: max. 1.5kg/h)		
Gas hose	Certified gas hose according to applicable EN-standard (max1.5m)		
Appliance mass:	30 kg		

ATTENTION: This appliance is fitted with a flexible gas rubber pipe and clamps that must be used; never use a different kind of either and always use according to the national regulations in force of the country of destination. These components should be periodically replaced, according to the date reported on the body of each of them, or according to the national regulations in force of the country of destination. An LPG cylinder is not included should be acquired according to LPG compartment shape and cylinder support.

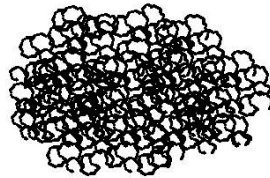
Assembly Instructions

Parts supplied:

- Fire Pit (1pcs)



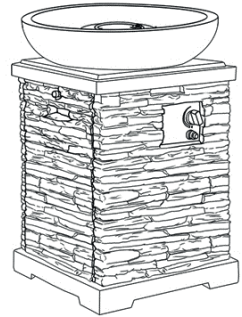
- Lava Rocks (3kg)



This gas fire pit must be installed on a flat, stable surface away from combustable materials.

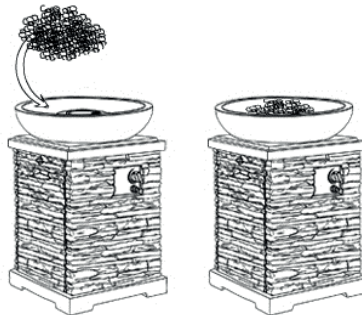
Step 1

1. Remove fire pit and cylinder from the packaging. Place on a flat stable surface.



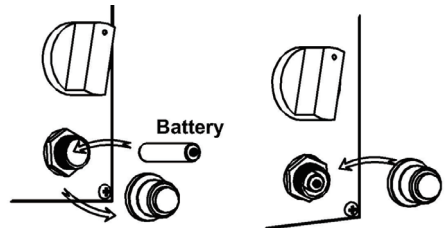
Step 2

2. Place 3kg of lava rocks on and around the burner evenly.



Step 3

Unscrew the button cap of the ignitor. Insert 1 x AA battery into the ignitor with the anode outwards. Screw the ignitor cap back onto the ignitor.

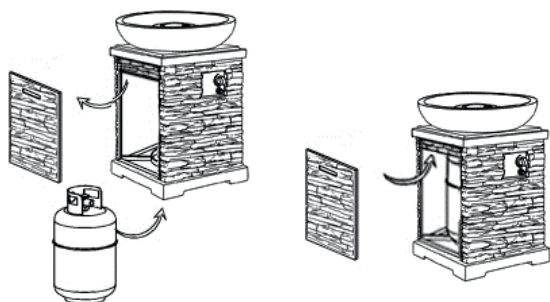


Connecting the LPG Gas Cylinder

Before assembly, make sure all packing material has been removed. A flexible gas rubber hose (EN 1763-1) and clamps are supplied with this appliance and must be used. You need to acquire an LPG, propane gas cylinder, usually marketed as patio gas. We recommend a 5kg cylinder for this product to be housed inside, or a larger bottle can be used externally. An external bottle must be placed 1.8m from the heater. Replacement must be made as per the instructions specified in the "Replace the gas cylinder" section of this instruction manual. Be careful not to kink the flexible gas rubber hose.

Make sure the appliance gas knob is turned "OFF" (full disk) before assembling.

1. Put the LPG tank inside the tank housing.
2. The cylinder must be kept at least 5 feet away from the fire pit during use.
3. Connect the regulator to LPG cylinder by hand by attaching to the top of the bottle and securing in place using the black lever on the regulator.
4. Connect the hose to the appliance and the regulator. Tighten the screw of the hose clamp with a screwdriver.

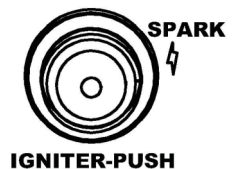
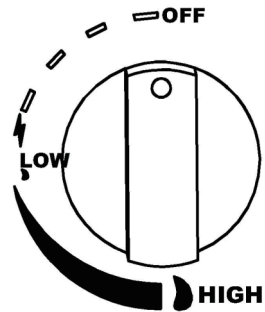


Operation

Before igniting the appliance, perform the “Leakage Testing” in a well ventilated area (outdoors). On first use and after every LPG cylinder change, the appliance gas circuit must be purged of air before igniting! To do this, turn the control knob counter-clockwise to the ignition position and push and hold for 1 minute before attempting ignition.

To turn on the heater

1. Ensure the LPG cylinder has 4/5 its capacity and contains proper LPG Gas (refer to *Technical Data on page*).
2. Turn LPG cylinder valve to the full **ON** position and close the LPG compartment panel. Ensure the burner control knob is in the **OFF** position (full disk).
3. Push the control knob and keep pressing while turning counter-clockwise to the corresponding **HIGH** position (big flame). At the same time push the ignition button. The ignition will spark automatically.
4. When the burner is lit in **HIGH** position (big flame), stop pushing the ignition button (star) and keep the control knob pressed for 10 - 20 seconds. Then release it (the first ignition usually takes more time, because the gas circuit is full of air).



Note

- If the burner does not stay lit, wait 5 minutes and then repeat steps 3 and 4.
- Adjust the heat input by turning the knob from the Maximum position (big flame), to the Minimum position.
- After lighting, turn knob from Minimum to Maximum (big flame) position and back, to check flame stability.
- In case of accidental flame outage (for wind or other reasons), FSD will shut-off gas supply automatically (FSD = Flame Safety Device).
- The burner may be noisy when initially turned on
- To eliminate excessive noise from the burner, turn the control knob to the Minimum position and back. If you experience any ignition problem consult “Troubleshooting”.

To turn OFF the heater

1. Turn appliance control knob clockwise up to “OFF” position.
2. Turn the LPG cylinder valve to the “OFF” position.
3. Allow the appliance to cool before moving it (at least 30 minutes)

Re-lighting

1. Turn control knob to “OFF” position.
2. Wait at least 5 minutes, to let gas dissipate, before attempting re-light burner.
3. Repeat the “Operating” steps

Warning

Changing of the gas cylinder must be undertaken in a flame free environment. Ensure that all taps on the heater are in the closed position. Do not change the gas cylinder whilst smoking

Replacing the gas cylinder

1. Ensure there are no naked flames or sparks in the immediate vicinity
2. Close the valve of the gas cylinder.
3. Disconnect the regulator from the cylinder.
4. Replace the cylinder.Re-attach the regulator to the cylinder.
5. It is essential before the unit is used, perform a leak test using soapy water solution.

Cleaning & maintenance

To enjoy outstanding performance of your heater for years make sure you perform the following maintenance activities on a regular basis:

- Keep exterior surfaces clean.
- Use warm soapy water for cleaning. Never use flammable, corrosive or abrasive cleaners.
- While washing your unit, be sure to keep the area around the burner and pilot assembly dry at all time. If the gas control is exposed to water in any way, do NOT try to use it. It must be replaced.
- After a long break from operation, the unit should be inspected for spiders, spider webs or other insects.
- Air flow must be unobstructed. Keep controls, burner and circulating air passageways clean.

Signs of possible blockage include:

- Gas odour with extreme yellow tipping of flame.
- Heater does NOT reach the desired temperature.
- Heater glow is excessively uneven.
- Heater makes popping noises.
- Spider and insects can nest in burner or orifices. This dangerous condition can damage the heater and render it unsafe for use. Clean burner holes by using a heavy-duty pipe cleaner. Compressed air may help clear away smaller particles.
- Carbon deposits may create a fire hazard. Clean the body and heating outlet with soapy water if any carbon deposits develop.

Troubleshooting

Problem:	Condition:	Solution suggested:
Burner won't light	Control knob is not in Maximum position (big flame).	Turn control knob in maximum position (big flame).
	LPG cylinder valve is closed / empty.	Open the valve / replace LPG cylinder with a new one.
	Blockage in the injector.	Clean or replace injector.
	Air in the gas circuit.	Open gas line and bleed it (pressing control knob in) not for over 1 minute or until you smell gas.
	Low gas pressure.	Replace LPG cylinder with a new one.
	Igniter fails.	Use match to light burner; change battery or obtain new igniter and replace it.
Burner won't stay lit	Dirty build up around burner.	Clean dirty around the burner.
	Low flames or not full running around the burner.	Flame spreader holes partially closed; clean the burner.
	Thermocouple is not operating correctly.	Replace thermocouple (FSD).
	Low Gas pressure.	Replace LPG cylinder with a new one.
Burner flame is low Note: Do not operate appliance below 5 °C	Outdoor temperature is greater than 5 °C and LPG cylinder is less than 25 % full.	Replace LPG cylinder with a new one.
	Gas pipe is bent or kinked.	Straighten hose and perform leakage test on gas pipe.
	Control knob is fully Maximum position (big flame).	Turn control knob to "OFF" position (full disk), let cool to room temperature and check burner and orifices for blockage.
Carbon build-up	Dirty or film on burner.	Clean burner.
Flash back (flame inside burner)	Burner ports are blocked.	Switch OFF the appliance. Close LPG cylinder valve. Wait 2 minutes, following the ignition procedure. Ignite burner. If problem continuous, switch-off. Contact your dealer.
Thick black smoke	Blockage in the burner.	Turn control knob to "OFF" position, let the appliance to cool at room temperature and remove blockage and clean burner inside and outside.

Storage

Between uses:

- Turn the control knob to “OFF” position.
- Turn LPG cylinder to “OFF” position.
- Store heater upright in an area sheltered away from weather conditions (such as rain, sleet, hail, snow).
- If desired, cover heater to protect exterior surfaces and to help prevent dust and debris collecting in air passages.

During periods of extended inactivity or when transporting:

- Turn the control knob to “OFF” position.
- Disconnect LPG Cylinder and move to a secure, well-ventilated location outdoors.
- DO NOT store in a location that will exceed 50 degrees C.
- Store heater upright in an area sheltered away from weather conditions (such as rain, sleet, hail, snow).
- If desired, cover heater to protect exterior surfaces and to help prevent dust and debris collecting in air passages.

Disposal

In accordance with European Directive 2001/96/EG concerning used electrical and electronic appliances (waste electrical and electronic equipment – WEEE), please return any electrical equipment that you will no longer use to the collection points provided for their disposal.

This symbol indicates that the appliance cannot be treated as normal domestic trash, but must be handed to a collection point for recycling electric and electronic appliances.

Information concerning where the equipment can be disposed of can be obtained from your local authority.



Customer Service

- Repairs must be carried out by authorized gas specialist, ensuring appliance safety.
- Please contact a qualified service agent or a suitably qualified gas engineer.
- Improper repairs could lead to danger to the user.

Warranty does not cover damage of failure which results from alteration, accident, misuse, abuse, neglect, commercial use or improper maintenance. In line with our policy of continuous product development we reserve the right to change the product and documentation specifications without notice.



Heat Outdoors

Unit 9, Stort Valley Industrial Estate
Stansted Road, Bishop's Stortford
Hertfordshire, United Kingdom
CM23 2TU

www.heat-outdoors.co.uk

01279 466500

info@heat-outdoors.co.uk